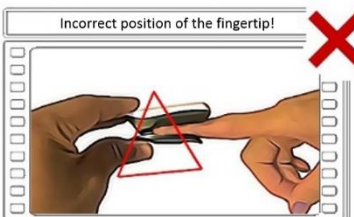
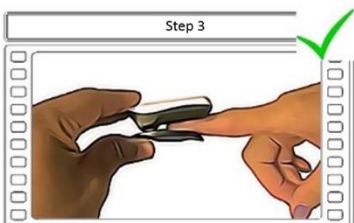
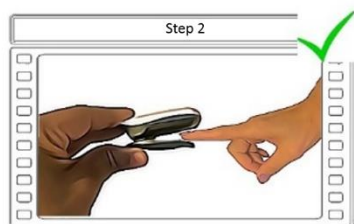
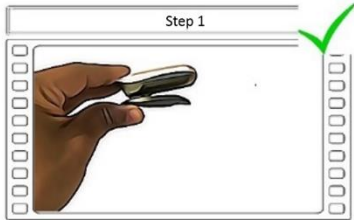
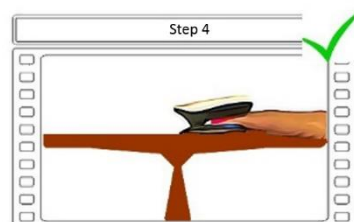


⚠ Extra information for a correct measurement with the StiffnoGraph

Place your finger in the correct position to avoid the risk of getting inaccurate or varying scores!



The fingertip should not get stuck at the end of the device. The finger should be placed on the sensor, but the nail/nailbed should not be placed tightly to the end of the device. You will get incorrect and varying results if the finger is not positioned correctly.



For the correct measurement:

1. Make sure your fingers are not cold and your nails are not polished.
2. Preferably use your left hand.
3. The finger should be placed correctly on the sensor (preferably use your index or middle finger). See STEP 3
4. Next, put your flat hand on a horizontal plane (for example a table). See STEP 4
5. Never perform several measurements of the same person in close succession. Wait 20 minutes before repeating the measurement.
6. As mentioned in the handbook, the score can show a deviation of +/-1. This is due to the cutoff values of the scores. An example: the StiffnoGraph shows a score 2 and at a subsequent measurement a score 3. This means that the value is between 2,7 and 3. It does not mean that the device is not functioning well.
7. The factors described below can result in varying scores from the StiffnoGraph:

- Wrong placement of the finger
- Nail polish
- Cold finger(s)
- Stress
- Wrong sitting posture during the measurement
- Irregular blood pressure
- Use of certain medication
- Heart rhythm disorders



Read the included handbook before use!